

# Ruse Airport's Investment Profile

---

## Airport's Features

- Former military airport (in operation till 1999, both for military and civil flights)
- 100% municipal property
- Located near the village of Shtraklevo (Щръклево), Ivanovo Municipality, Ruse District
  - Latitude: 43° 41' 45" N
  - Longitude: 26° 03' 29" E
  - Elevation: 187 m
- Availability of:
  - Concrete runway for takeoffs and landing: 2.5 km long, 50 m wide (An-24, An-12, Tu-134, Tu-154 and Il-76 aircrafts used to be accepted and serviced)
  - Passengers' terminal
  - Reception building
  - Fresh water-supply system
  - Telephone installation of copper-cables
  - Optical communication cable passing about 0,8 km away from the airport
  - Electricity supply provided
  - Garage for the aircrafts' maintenance equipment
  - Air-traffic control tower
  - Nearby lies an industrial railway establishment for the purposes of fuel and oils, located about 10 km away from the airport on an area of 40 000 square meters
  - Huge estates around the airport owned by the state (ex-military outfit), e.g. to be developed as logistic center, etc.



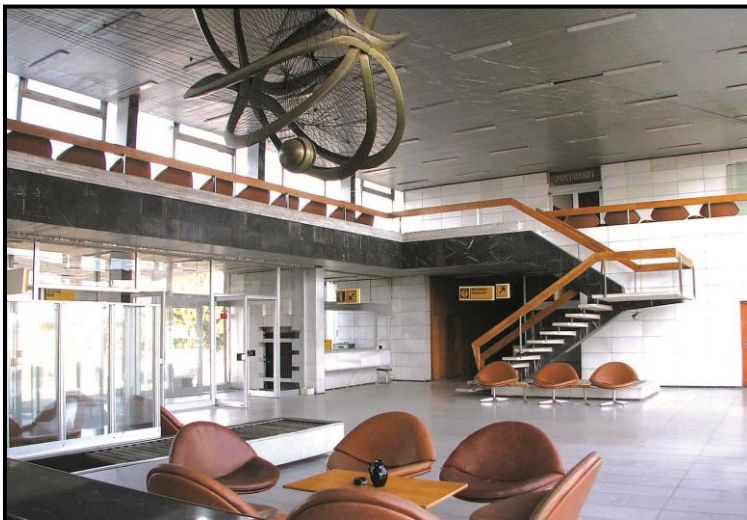
At present, all Ruse Airport facilities are arranged in a way which enables the split servicing of passengers and cargo flows, as the passages to both zones are autonomous and thus the crossing of the runway is prevented. The passengers' service can be performed on the northern part of the runway. The cargo could be handled separately, on the southern part of the runway. It is possible for different-purpose warehouses to be constructed there, e.g. for reloading, for the needs of customs control as well as for trainings etc.

## Ruse Region's Main Potentials

- Outstanding location:
  - Danube River
  - Pan-European Transport Corridors 7 and 9
  - The single Danube Bridge connecting Bulgaria and Romania at present
  - Proximity to the Romanian capital of Bucharest (both airports of Bucharest are currently overloaded)
  - Belonging to a cross-border agglomeration of Ruse-Bucharest, with total population more than 3.000.000 people
- Multimodality: 4 modes of transport: road, rail, water & air:
  - ca. 18 km from the Airport to the town of Ruse
  - ca. 20 km from the Airport to the Danube Bridge
  - ca. 11 km from the Airport to the Port of Ruse
  - ca. 6 km from the Airport to the Ruse – Varna railway line
- Vivid traditions in terms of cross-border cooperation
- Ruse University (more than 10.000 students)
- Access to EU-Funds
- Ruse is determined to be Bulgaria's coordination center for the implementation of the EU Strategy for the Danube Region



## Opportunities for the Airport's Use



1. Internal airline: Ruse – Sofia (ca. 700 people travelling by bus/car every day on this route)
2. External airlines, operated inter alia by low-cost companies
3. Emergency landing airport (Bucharest)
4. Cargo flights
5. Charter lines, operated inter alia by Danube cruise shipping companies (more than 200 cruise ships per year)
6. Re-loading center (24/7 use possible due to the airport's remoteness from intensively populated areas)
7. Trainings for pilots

## Contact

Mr. Strahil Karapchanski, PhD, Deputy Mayor of Ruse Municipality,  
Mobile: +359.884.977900, E-mail: [karapchanski@gmail.com](mailto:karapchanski@gmail.com)